

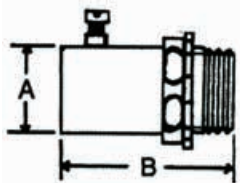


FITTINGS

EMT Steel Set Screw

F25

EMT Set Screw Connectors - Steel

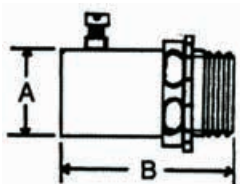


- Use to Connect EMT Conduit to Steel Box, Load Center, or other Metal Enclosures
- Heavy Steel Walls
- Pre-Set/Pre-Staked Combo Head Set-Screws
- Male NPSM hub threads
- Concrete Tight (When Taped)
- UL Listed for EMT Conduit
- 2-1/2" - 4" are also for use with Rigid & IMC
- 2-1/2" - 4" Uses 2 Set Screws

DIMENSIONS - INCHES

CAT. NO.	TRADE SIZE	DIMENSIONS		INNER BOX	OUTER BOX
		A	B		
14880	1/2"	.84	1.47	50	500
14881	3/4"	1.06	1.57	25	250
14882	1"	1.32	1.86	20	200
14883	1-1/4"	1.68	2.24	-	25
14884	1-1/2"	1.91	2.24	-	25
14885	2"	2.37	2.35	-	20
14886	2-1/2"	3.14	2.89	-	12
14887	3"	3.77	2.95	-	12
14888	3-1/2"	4.28	3.23	-	4
14889	4"	4.78	3.33	-	8

EMT Set Screw Connectors - Insulated Throat - Steel

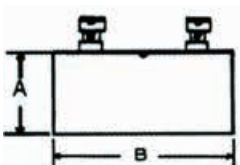


- Use to Connect EMT Conduit to Steel Box, Load Center, or other Metal Enclosures
- Insulated Throat
- Heavy Steel Walls
- Pre-Set/Pre-Staked Combo Head Set-Screws
- Male NPSM hub threads
- Concrete Tight (When Taped)
- UL Listed for EMT Conduit
- 2-1/2" - 4" are also for use with Rigid & IMC
- 2-1/2" - 4" Uses 2 Set Screws

DIMENSIONS - INCHES

CAT. NO.	TRADE SIZE	DIMENSIONS		INNER BOX	OUTER BOX
		A	B		
14890	1/2"	.84	1.51	50	500
14891	3/4"	1.06	1.61	25	250
14892	1"	1.32	1.90	20	200
14893	1-1/4"	1.68	2.28	-	25
14894	1-1/2"	1.91	2.28	-	25
14895	2"	2.37	2.40	-	20
14896	2-1/2"	3.14	2.95	-	8
14897	3"	3.77	3.02	-	12
14898	3-1/2"	4.28	3.29	-	4
14899	4"	4.78	3.39	-	6

EMT Set Screw Couplings - Steel



- Use to Join Two Lengths of EMT Conduit together
- Heavy Steel Walls
- Pre-Set/Pre-Staked Combo Head Set-Screws
- Concrete Tight (When Taped)
- UL Listed for EMT Conduit
- 2-1/2" - 4" are also for use with Rigid & IMC
- 2-1/2" - 4" Uses 4 Set Screws

DIMENSIONS - INCHES

CAT. NO.	TRADE SIZE	DIMENSIONS		INNER BOX	OUTER BOX
		A	B		
14900	1/2"	.84	1.59	50	500
14901	3/4"	1.06	1.80	25	250
14902	1"	1.32	2.04	10	100
14903	1-1/4"	1.68	2.76	-	25
14904	1-1/2"	1.91	2.97	-	25
14905	2"	2.37	3.22	-	20
14906	2-1/2"	3.14	3.86	-	12
14907	3"	3.77	4.23	-	4
14908	3-1/2"	4.28	4.48	-	6
14909	4"	4.78	4.72	-	6